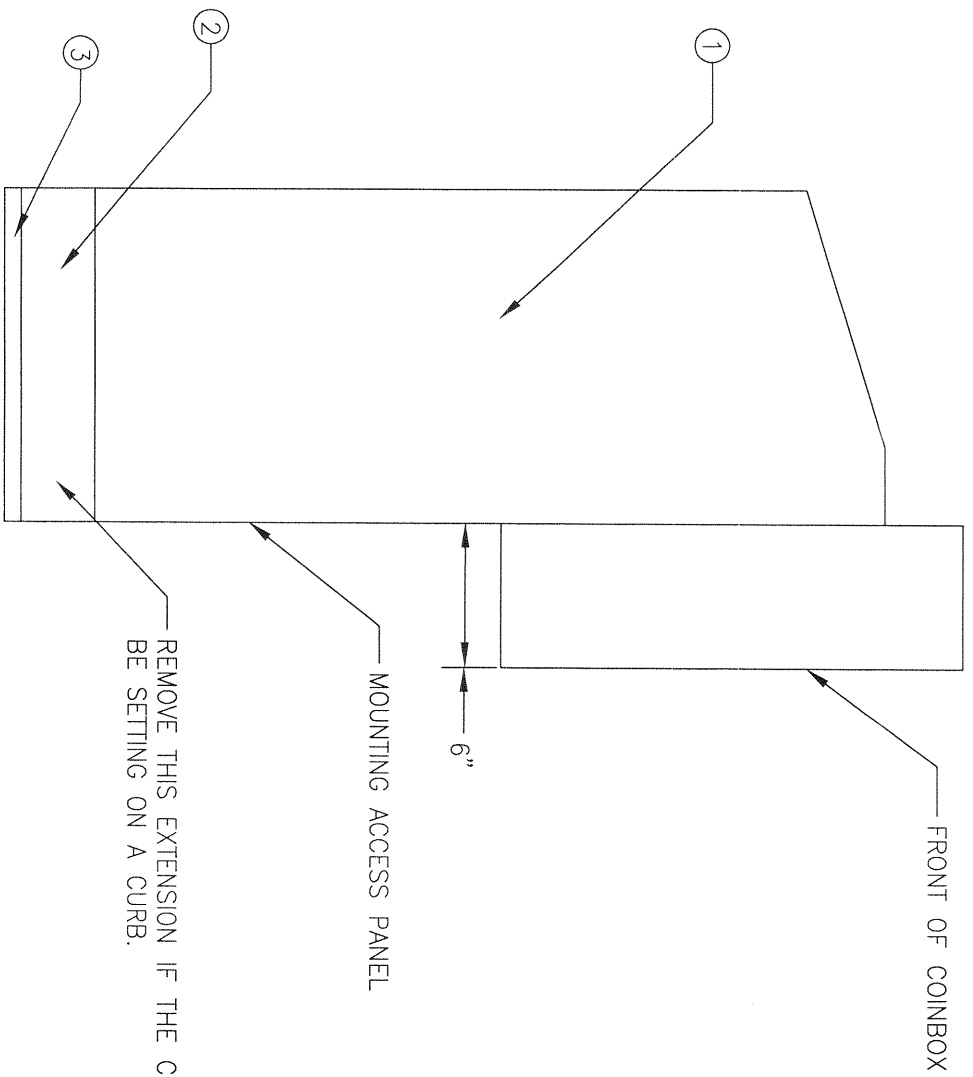


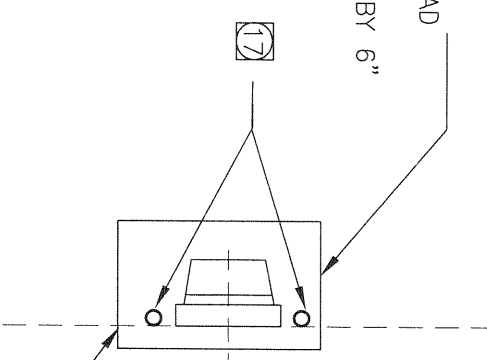
INSTALLATION NOTES:

1. CAREFULLY UNPACK THE COINBOX FROM ITS CRATING. LOCATE THE KEYS, TOOLS, ETC. AND SET THEM ASIDE FOR LATER USE.
2. DISCARD THE CRATING MATERIALS.
3. USING THE PROPER KEY, UNLOCK THE SECURITY BAR, REMOVE THE BAR, UNLOCK THE PRINTER DOOR, OPEN IT, AND UNLOCK THE MAIN DOOR LOCK.
4. CAUTION OPEN THE COINBOX DOOR CAREFULLY AND REMOVE THE LOWER ACCESS PANEL BY PULLING UP ON THE TWO LATCHES. THE COINBOX DOOR IS VERY HEAVY AND THE COINBOX MAY TIP OVER IF NOT HELD SECURELY WHILE REMOVING THE LOWER ACCESS PANEL.
5. CLOSE THE COINBOX DOOR, AND SECURE THE LATCH, SO IT WILL NOT, INADVERTENTLY, OPEN DURING THE INSTALLATION.
6. LOCATE TWO (3/4" MIN.) CONDUITS UP THROUGH THE CONCRETE DRIVE UNDER THE COINBOX AS WELL AS THE 8 FT. GROUND ROD AS SHOWN ON SHEET 2. (NOTE: ONE CONDUIT FOR 110VAC POWER, THE OTHER IS FOR SIGNAL AND DATA WIRES.)
7. REMOVE THE LOWER MOUNTING BASE (ITEM 2) FROM THE COINBOX AS RECEIVED, USING THE ALLEN WRENCH SUPPLIED WITH THE COINBOX. SAVE THE BOLTS FOR RE-INSTALLATION IN A LATER STEP.
8. IF THE COINBOX IS TO BE MOUNTED DIRECTLY TO THE DRIVEWAY, (NO CURB), GO TO STEP #10.
9. IF THE COINBOX IS TO BE MOUNTED ON A CURB (NORMAL 6" HIGH), REMOVE THE 6" PEDESTAL EXTENSION, USING THE ALLEN WRENCH SUPPLIED. IF THE EXTENSION (ITEM 2) IS NOT USED DURING INSTALLATION, DISCARD THIS EXTENSION ALONG WITH THE ATTACHING BOLTS SUPPLIED.
10. SET THE PEDESTAL MOUNTING BASE ON THE CONCRETE, IN THE PROPER LOCATION AS SHOWN ON SHEET 2, LOCATING IT THE PROPER DISTANCE FROM THE DOOR, LINING UP THE FRONT OF THE COINBOX WITH THE EDGE OF THE DOOR OPENING AS SHOWN IN DETAIL A.
11. SECURE THE PEDESTAL BASE (ITEM 3) TO THE CONCRETE USING 1/2" CONCRETE ANCHORS WITH 3/8" HARDWARE. (MIN. OF 4 ANCHORS REQUIRED) INSURE THAT THE PEDESTAL MOUNTING BASE (ITEM 3) IS SQUARE WITH THE CARWASH DOOR OPENING.
12. USING THE PROPER EQUIPMENT OR EXTRA MANPOWER, SET THE COINBOX PEDESTAL (ITEM 1) ON TOP OF THE PEDESTAL BASE (ITEM 3) INSURE THAT THE TWO PARTS ARE ALIGNED. INSTALL THE BOLTS REMOVED EARLIER, AND TIGHTEN THEM WITH THE ALLEN WRENCH SUPPLIED. WHICH PLUGS INTO AN INTERFACE BOX CONNECTOR
13. PULL THE WIRING INTO THE CONDUITS AS LISTED PER THE SITE REQUIREMENTS SHOWN ON SHEET 2.
14. OPEN THE COINBOX DOOR, AND ROUTE THE FIELD WIRING TO THE TOP TERMINAL STRIP. WIRE THE FIELD WIRING TO THE PROPER TERMINALS AS REQUIRED.
15. USING A GROUND ROD CLAMP AND A 3/8" RING TERMINAL, INSTALL A #12 MINIMUM GROUND WIRE BETWEEN THE GROUND ROD AND A COINBOX CASE MOUNTING BOLT.
16. RUN THE 110 VAC, 1 PH. GFCI CIRCUIT WIRING TO THE OUTLET LOCATED IN THE COINBOX NEAR THE TERMINAL STRIP.
17. RECOMMENDED-- INSTALL 2- 4" OR 6" DIA. HEAVY WALL STEEL PIPE BOLLERS FILLED WITH CONCRETE ON EACH SIDE OF THE COINBOX. THESE SHOULD BE 36" ABOVE GROUND LEVEL AND THEY SHOULD BE BELOW GROUND BELOW THE FROST LEVEL. IT IS SUGGESTED THAT THESE BE PAINTED YELLOW WITH BLACK STRIPES FOR SAFETY.

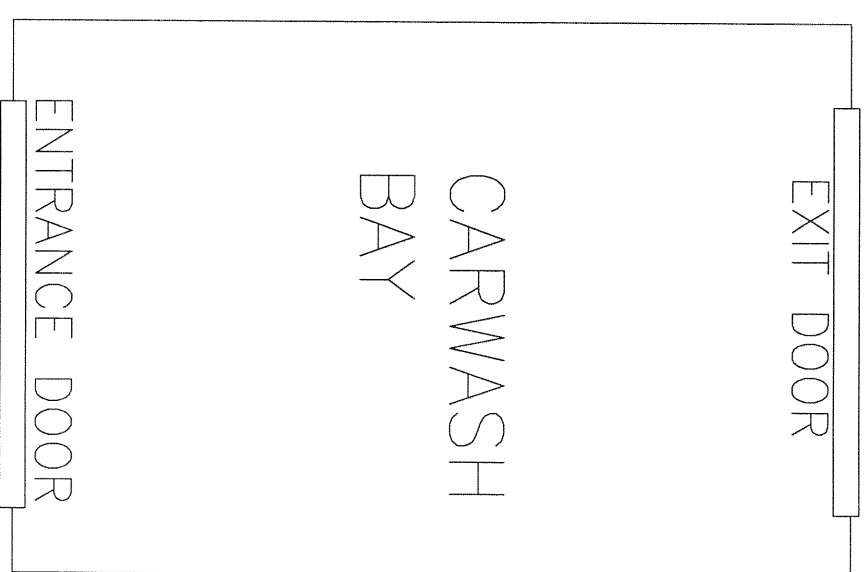
COINBOX (SIDE VIEW)



MINIMUM CONCRETE PAD SIZE TO BE: 48" BY 36" BY 6" THICK



DETAIL A



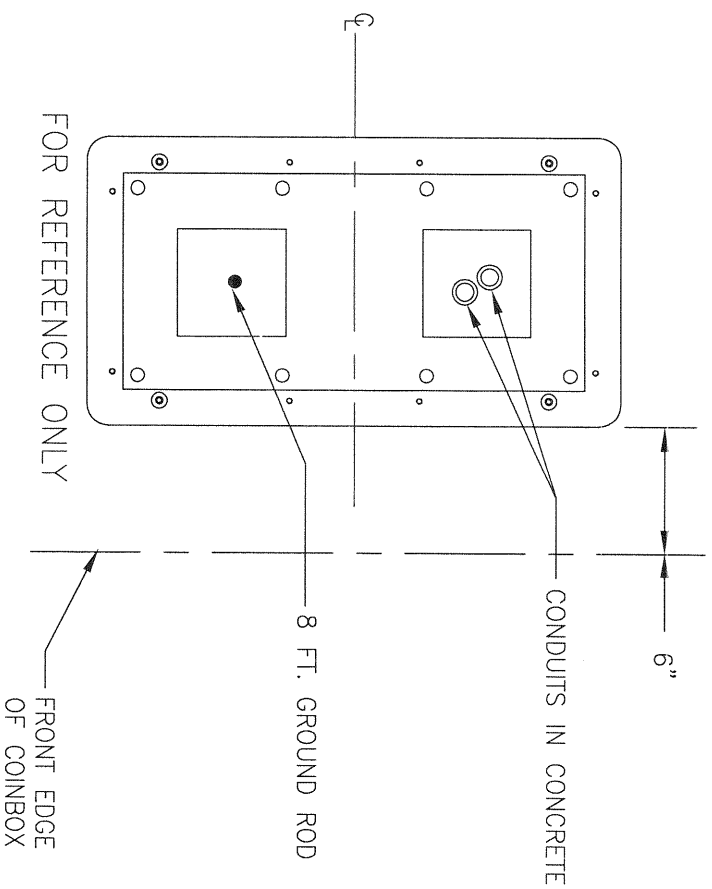
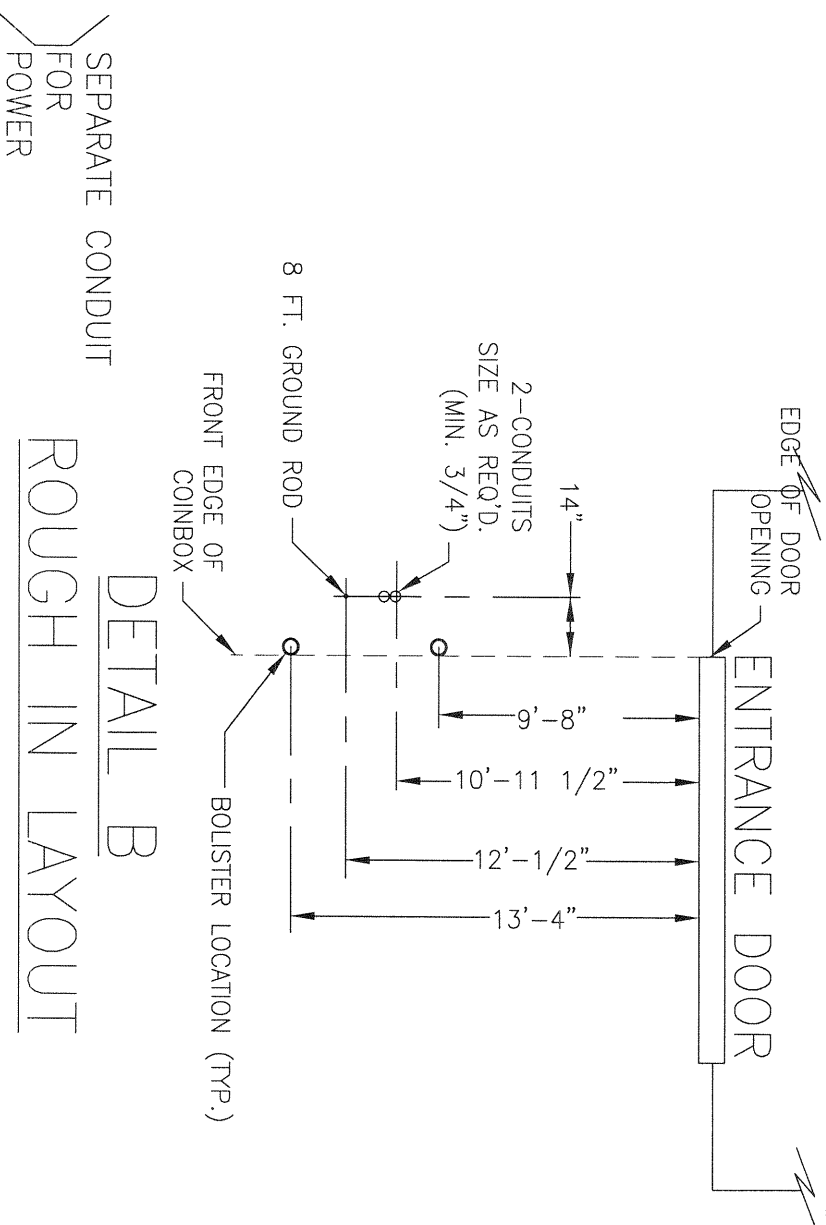
SHEET 1 OF 4

INTELIO TECHNOLOGIES, INC. 16560 ASTON STREET, IRVINE, CA 92606		All specifications subject to change without notice.		PRODUCT					
INSTALLATION/ ACTIVA COINBOX		SCALE NONE	DATE 8/7/07	ACTIVA					
REV. C	DWG NO. AC - I - 0001	DRAWN REB	CHK'D REB	COINBOX	C		ADDED INFORMATION ON MIN. CONCRETE PAD SIZE		
		APVD REB	DATE 8/7/07		B	N/A	REVISED FOR 2 CONDUITS REQUIRED	REB	8/20/07
					A	N/A	REVISED VARIOUS NAMING CONVENTIONS	REB	8/15/07
					LTR	ECO	DESCRIPTION	BY	DATE
								APVD	

FIELD WIRING REQUIREMENTS

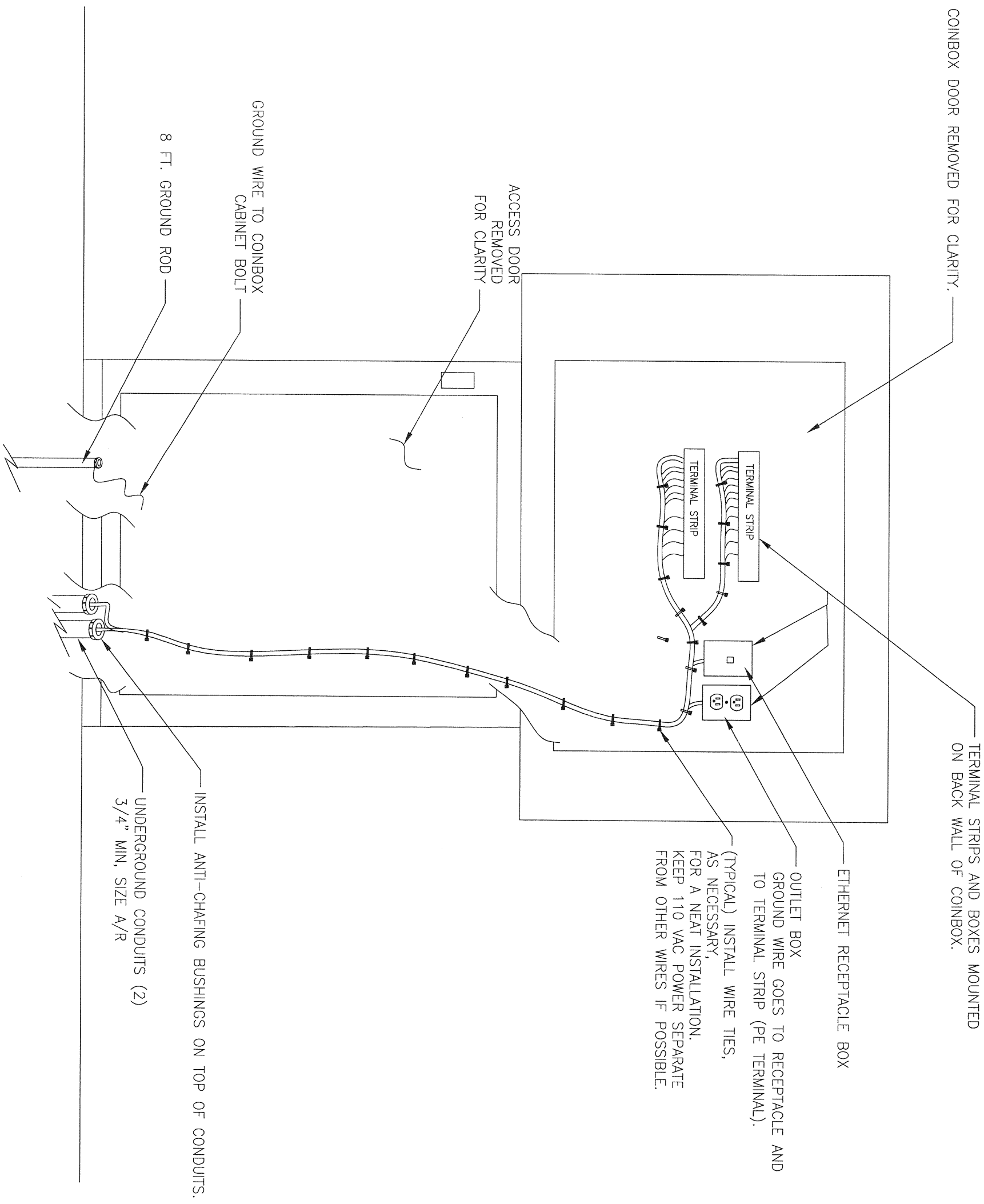
NOTE: WIRES NEEDED ARE SITE SPECIFIC. CONTACT THE LOCAL SERVICE TECHNICIAN TO DETERMINE WHAT WIRES ARE REQUIRED FOR THE PARTICULAR INSTALLATION.

WIRE NO.	DESCRIPTION / FUNCTION	WIRE AWG/TYPE/COLOR
AC-HOT	110 VAC HOT FROM 15A GFCI BREAKER	#14 AWG BLACK
AC-COM	110 VAC COM FROM 15A GFCI BREAKER	#14 AWG WHITE
EARTH	GROUND WIRE PULLED IN CONDUIT	#14 AWG GREEN
701	NETWORK WIRE-SHIELDED CABLE WIRE	#18AWG BLACK IN SHIELDED CABLE
702	NETWORK WIRE - SHIELDED CABLE WIRE	#18AWG CLEAR IN SHIELDED CABLE
SHIELD	SHIELD OF NETWORK CABLE	CABLE SHIELD
ETHERNET	ETHERNET CABLE TO NETWORK	CAT-5E ETHERNET CABLE
396	INTERCOM SPEAKER WIRE	4 CONDUCTOR INTERCOM CABLE (OPT.)
397	INTERCOM SPEAKER WIRE	4 CONDUCTOR INTERCOM CABLE (OPT.)
398	INTERCOM PUSHBUTTON WIRE	4 CONDUCTOR INTERCOM CABLE (OPT.)
399	INTERCOM PUSHBUTTON WIRE	4 CONDUCTOR INTERCOM CABLE (OPT.)
736	DRIVE OFF SAFETY WIRE A END	#18 AWG BLACK (NOT FIELD WIRING)
738	DRIVE OFF SAFETY WIRE B END	#18 AWG BLACK (NOT FIELD WIRING)
19	COMMON FOR WIRES 104 AND 124	#18 AWG WHITE (OPT.)
104	CONVEYOR SYSTEM START PUSHBUTTON	#18 AWG BLACK (OPT.)
124	OUTSIDE SIGN SIGNAL WIRE	#18 AWG BLACK (OPT.)
711	MACHINE INPUT SELECT #1	#18 AWG BLACK (OPT.)
712	MACHINE INPUT SELECT #2	#18 AWG BLACK (OPT.)
713	MACHINE INPUT SELECT #3	#18 AWG BLACK (OPT.)
714	MACHINE INPUT SELECT #4	#18 AWG BLACK (OPT.)
715	MACHINE INPUT SELECT #5	#18 AWG BLACK (OPT.)
716	MACHINE OPTION SELECT #1	#18 AWG BLACK (OPT.)
717	MACHINE OPTION SELECT #2	#18 AWG BLACK (OPT.)
718	MACHINE OUT COMMON	#18 AWG BLACK (OPT.)
719	MACHINE BUSY	#18 AWG BLACK (OPT.)
720	MACHINE CONTROL POWER	#18 AWG BLACK (OPT.)
500	BACKUP ARMING SIGNAL	#18 AWG BLACK (OPT.)
725	BACKUP ARMING SIGNAL COMMON	#18 AWG WHITE (OPT.)



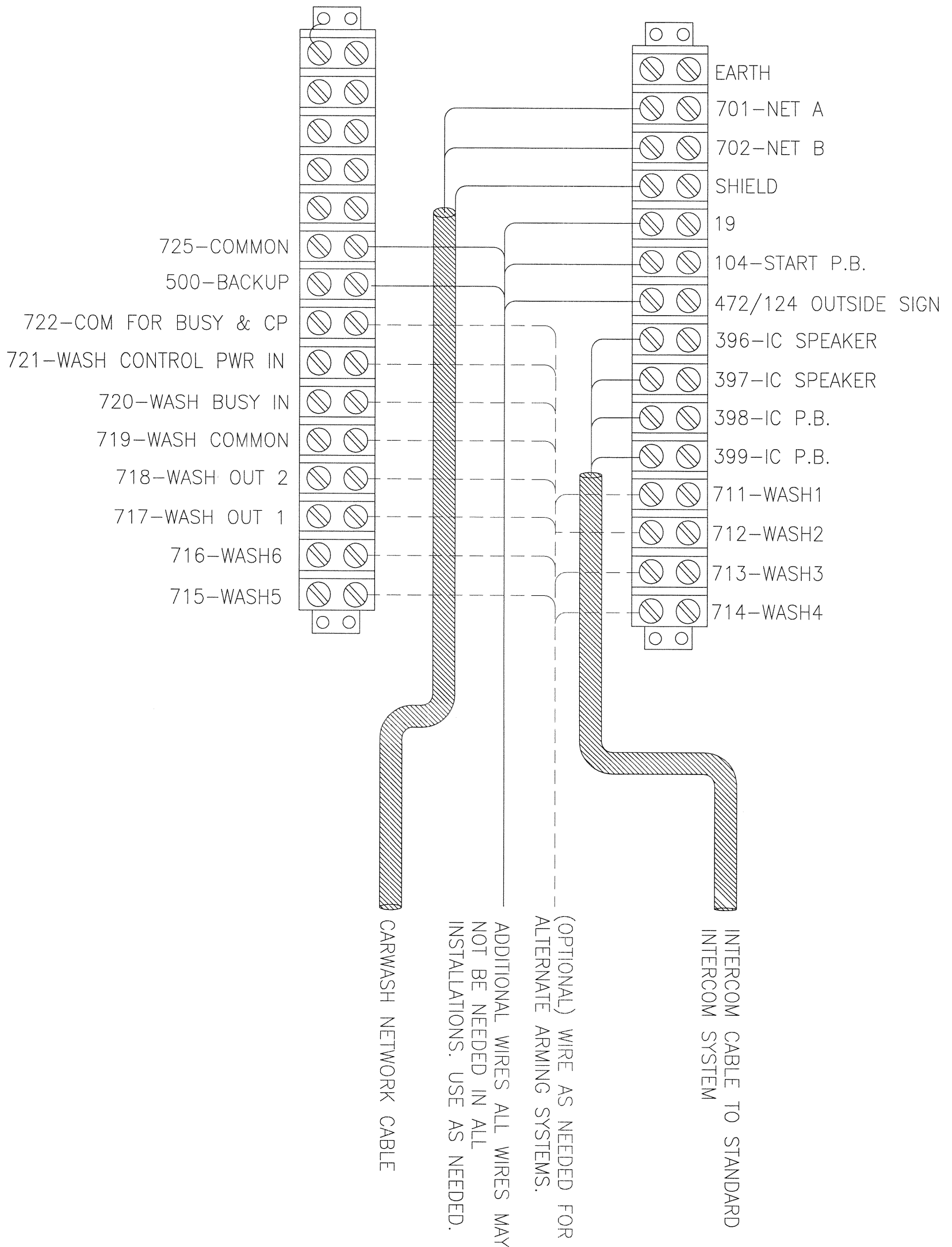
SHEET 2 OF 4

INTELIO TECHNOLOGIES, INC. 16560 ASTON STREET, IRVINE, CA 92606		All specifications subject to change without notice.		PRODUCT								
PRE-INSTALLATION/ ACTIVA COINBOX		SCALE	DATE	ACTIVA								
REV. DWG NO.		DRAWN	CHK'D	COINBOX								
C	AC-I-001	REB	REB									
		APVD	DATE									
		REB	2/26/08		LTR	ECO						
				DESCRIPTION							BY	DATE
												APVD



SHEET 3 OF 4

INTELIO TECHNOLOGIES, INC. 16560 ASTON STREET, IRVINE, CA 92606		All specifications subject to change without notice.		PRODUCT ACTIVA COINBOX					
INSTALLATION/ ACTIVA COINBOX		SCALE NONE	DATE 8/7/07						
REV. C	DWG NO. AC-1-0003	DRAWN REB	CHK'D REB	B N/A	REVISED FOR 2 CONDUITS REQUIRED	REB	8/20/07	REB	
		APVD REB	DATE 8/7/07	A N/A	REVISED VARIOUS NAMING CONVENTIONS	REB	8/15/07	REB	
				LTR ECO	DESCRIPTION	BY	DATE	APVD	



TERMINAL STRIP WIRING

SHEET 4 OF 4

INTELIO TECHNOLOGIES, INC. 16560 ASTON STREET, IRVINE, CA 92606		All specifications subject to change without notice.		PRODUCT					
INSTALLATION/ ACTIVA COINBOX		SCALE	DATE						
		NONE	8/7/07						
REV.	DWG NO.	APVD	DATE	B	N/A	REVISED FOR 2 CONDUITS REQUIRED	REB	8/20/07	REB
C	AC- 1 - 0003	REB	8/7/07	A	N/A	REVISED VARIOUS NAMING CONVENTIONS	REB	8/15/07	REB
				LTR	ECO	DESCRIPTION	BY	DATE	APVD